



**THE MINI CABRIO.**





## LIVE UNFILTERED.

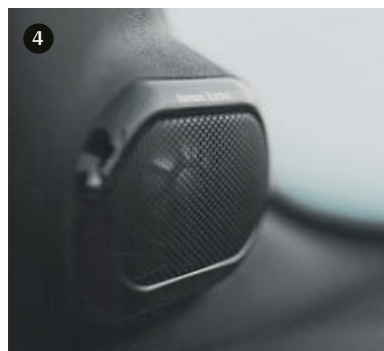
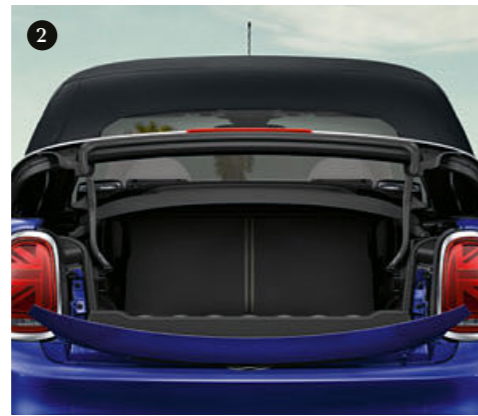
Feel the exhilaration of the wind in your hair and the sun on your skin: opening the electric soft top also opens new horizons and perspectives. The MINI Cabrio inspires you to see things differently today to how you saw them yesterday and to experience the world with a whole new intensity.

When the open road stretches out ahead of you, enjoy that "go-kart" rush with the roof down. What's more, thanks to smart networks connecting the digital and automotive worlds, it's never been easier to find the fastest or most scenic route to your destination.



# A CAR FOR OPEN MINDS.

Live for the moment – and enjoy the very best view. Having a sharp angled front windscreen and the most spacious interior in its class, the MINI Cabrio allows up to four people to see more of their surroundings. Smart technology and thoughtfully designed features open up new avenues to explore each and every day. Plus, that open-air feeling gives you the boost you need to turn those spontaneous plans into a reality.



① LED headlights with Matrix light functionality. ② Easy Load system | LED rear lights with Union Jack design. ③ Wind deflector | rollover protection system, concealed within the bodywork. ④ 360-watt Harman Kardon® hi-fi system with 12 speakers. ⑤ MINI Head-Up Display. ⑥ 22.4 cm/8.8" touchscreen (in connection with MINI Connected Navigation Plus) | reversing camera | automatic climate control. ⑦ Electric soft top opens in under 20 seconds | 18" light-alloy wheels Cone Spoke white.



# WHAT'S YOUR SUPERPOWER?

Are you after a leisurely cruise or a quick spin? When it comes to power and performance, the three MINI Cabrio models offer something for every sun-seeker – all with cutting-edge MINI Twin Power Turbo technology. The 6-speed transmission is fitted as standard. As an optional extra, there's the 7-speed dual-clutch transmission, available in sports transmission design for the Cooper S. Switching between the MINI Driving Modes of MID, GREEN and SPORT changes the driving style in terms of steering and acceleration.



① MINI Driving Modes. ② Electronic gear selector lever for 7-gear double-clutch transmission.



## COOPER S.

Full speed ahead: The 2.0l 4-cylinder petrol engine with 192 hp/141 kW delivers a dynamic driving performance. This is further enhanced by the air intakes in the bumper and bonnet, the rear apron with diffuser insert and centrally positioned dual tailpipes.



## COOPER.

The Cooper's 1.5l 3-cylinder petrol engine delivers 136 hp/100 kW – the perfect combination of power and efficiency. Special features: Contrasting colour available for the mirror caps, safety bar, grille fins and tailgate handle in high-gloss black, 15" light-alloy wheels and chrome-plated tailpipe trims.



## ONE.

That go-kart sensation starts with the 1.5l 3-cylinder petrol engine, providing 102 hp/75 kW of power in the One – which can be recognised from the safety bar and tailgate handle in matt black and from the grille fins in high-gloss black.

# THE FREEDOM OF CHOICE.

With over a dozen different colours to choose from, you can make your MINI Cabrio an eye-catching expression of your personal style. The roof is available in two different styles, the mirror caps can either be in the body colour or in one of the contrasting colours: Aspen White, Melting Silver<sup>1</sup> or Jet Black. Of the 16 light-alloy wheel options, spanning a range of different styles and sizes from 15-inch to 18-inch, we present a selection of nine design highlights for you on the page opposite.



Standard colour  
Moonwalk Grey<sup>2</sup>



White Silver<sup>2</sup>



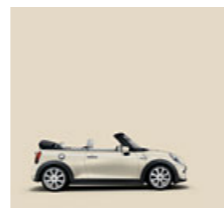
Melting Silver<sup>2</sup>



Thunder Grey<sup>2/3</sup>



Emerald Grey<sup>2</sup>



Pepper White



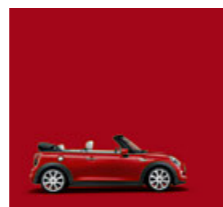
Starlight Blue<sup>2</sup>



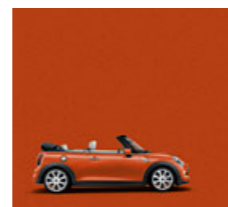
Midnight Black<sup>2</sup>



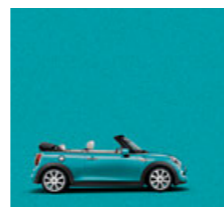
British Racing Green<sup>2</sup>



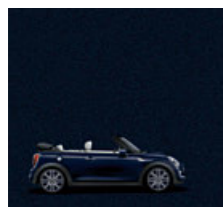
Chili Red



Solaris Orange<sup>2</sup>



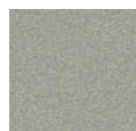
Caribbean Aqua<sup>2</sup>



Special colour MINI  
Yours Enigmatic Black<sup>2</sup>



Roof<sup>1</sup> and mirror cap colours:  
Jet Black, Melting Silver or Aspen White



Soft top:  
Black or MINI Yours



1 18" MINI Yours British Spoke 2-tone



2 18" Cone Spoke white



3 18" John Cooper Works Cup Spoke 2-tone<sup>4</sup>



4 17" Cosmos Spoke<sup>5</sup>

5 17" Rail Spoke 2-tone



6 17" Propeller Spoke 2-tone



7 17" Roulette Spoke 2-tone

8 16" Victory Spoke black

7 17" Roulette Spoke 2-tone

8 16" Victory Spoke black



9 16" Loop Spoke

For more information, visit [mini.com/configurator](http://mini.com/configurator)

<sup>1</sup> Not available on the One | <sup>2</sup> Metallic | <sup>3</sup> Only available in combination with Cooper S

<sup>4</sup> Only available in combination with the John Cooper Works package or the John Cooper Works trim | <sup>5</sup> Also available in black



# EXPRESS YOURSELF.

To help you make the interior of your MINI Cabrio as individual as you are, we offer a range of interior elements such as Colour Lines and interior surfaces in various colours and materials. These can be combined with up to nine seat covers and other design features for a truly personalised look.

For that extra special touch, we have developed the MINI Yours design range, featuring exclusive materials and craftsmanship to reflect the British heritage. A perfect pairing: the MINI Yours Interior Style Dark Silver decorative cockpit trim with the backlit Union Jack.



① Leather seats in Chester Malt Brown\* | Colour Line Malt Brown | MINI Yours Interior Style Fibre Alloy | structural elements and decorative rings in Dark Silver | ambient lighting with 770 different colour shades (part of the optional MINI Excitement package). ② Colour Line Satellite Grey | Interior colour Satellite Grey | structural elements and decorative rings in Piano Black. ③ John Cooper Works leather sports steering wheel. ④ The only four-seater in its class to offer such generous legroom and headroom | leather seats in Chester Satellite Grey\*.

\* See next page for more detailed information on leather interiors

# TAKE YOUR SEAT IN THE SUN.

Whether it's cloth, leather, leatherette or a combination of materials you prefer, you'll find what you are looking for in our nine options. You have four design elements (shown to the right) as building blocks for your individually designed interior. With the Colour Line, you define the colours of the door armrests and knee rolls, whilst your choice of the interior surfaces determines the material of the decorative door trim strips and cockpit trim strips.



**MINI YOURS.** Experience the luxury feel of the MINI Yours leather Lounge Carbon Black seat, with its classic Union Jack design on the front of the headrest, its striking piping and its immaculate workmanship. In a MINI Yours seat, you can really feel the difference, however long the drive.<sup>1</sup>



John Cooper Works sports seat  
Dinamica/leather finish  
Carbon Black



John Cooper Works sports seat  
Dinamica/cloth combination  
Carbon Black



Sports seat  
Leather Chester<sup>2</sup>  
Malt Brown



Sports seat  
Leather Chester  
Satellite Grey



Sports seat  
Leatherette  
Carbon Black



Sports seat  
Leatherette/cloth combination  
Black Pearl Carbon Black



Sports seat  
Leatherette/cloth combination  
Black Pearl Light Grey



Sports seat  
Leather Cross Punch<sup>2</sup>  
Carbon Black

## 1 THE 4 COLOUR LINES.



Carbon Black



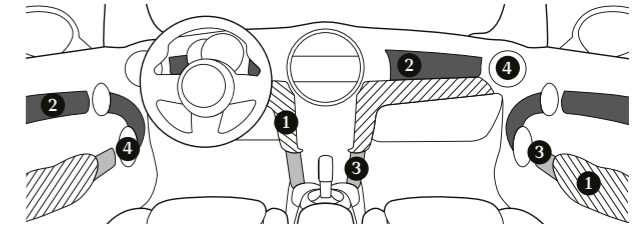
Malt Brown



Glowing Red



Satellite Grey



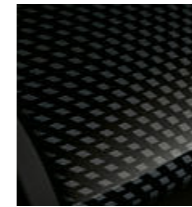
## 2 THE 6 INTERIOR SURFACES.



Piano Black



Dark Silver



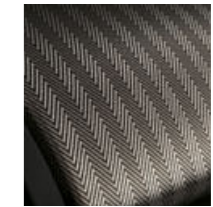
Black Chequered<sup>3</sup>



Hazy Grey (no decorative door trim)



MINI Yours Piano Black illuminated<sup>3</sup>



Fibre Alloy<sup>3</sup>

## 3 THE 2 STRUCTURAL ELEMENTS.

Optional interior surfaces are combined with structural elements in Piano Black. In the standard design of the MINI One and MINI Cooper, these elements are in Hazy Grey.

## 4 THE 2 DECORATIVE RINGS.

The decorative rings around the speakers, door openers, outer air vents and the gear selector lever are available in Piano Black and with the Chrome Line interior.

<sup>1</sup>Leather covering on the seat cushions, the backrest and the front and back headrests | <sup>2</sup>Leather covering on the seat cushions and the backrest | <sup>3</sup>With decorative door trim in Dark Silver

# MINI CONNECTED: WELCOME THE WORLD.

Create the perfect link between your MINI Cabrio and your digital life. MINI Connected seamlessly integrates your smartphone, various smartphone apps and the MINI Connected app with your MINI – which is equipped with its own SIM card. So you have new ways of interacting with the car, including for example smart voice control, remote services or your personal concierge. The smart navigation learns frequently visited destinations, takes real-time traffic information into consideration and gets you from A to B even more effectively. The MINI Connected app is a mobile extension of your car that keeps you in touch with your MINI and what's happening around you.

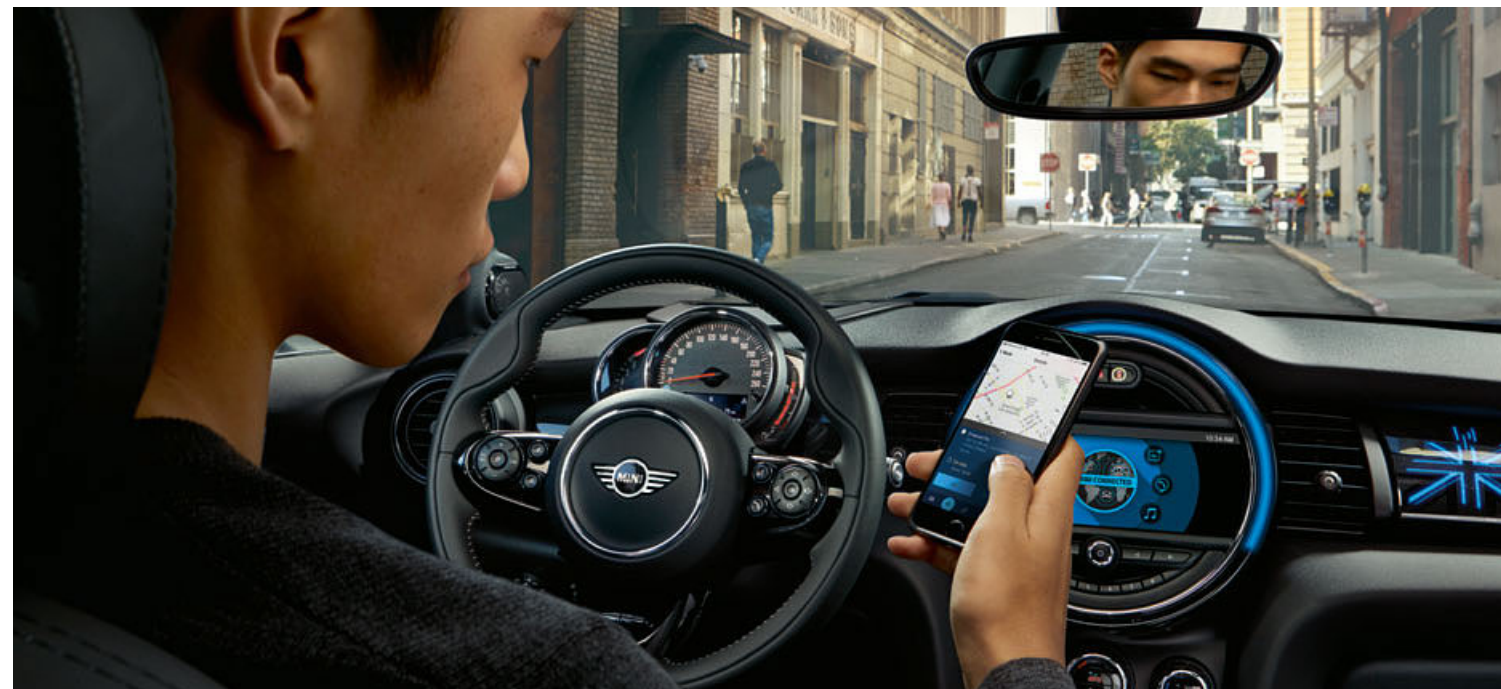
For more information, visit [mini.com/connected](http://mini.com/connected)



## READY TO FEEL THE WIND IN YOUR HAIR?

It goes without saying, no words or pictures in a brochure can ever really convey that rush you get from driving with the hood down – the only way to discover that is on a test drive. Experience it for yourself by booking a test drive with your MINI dealer – then get behind the wheel, buckle up and reach for the start button. Put pedal to the metal and discover the exhilarating sensation of fresh air rushing past, the wide-open view and that unique go-kart feeling that MINIs are famous for. It's guaranteed to put a smile on your face.

[mini.com](http://mini.com)





Engine – MINI Cabrio	One	Cooper	Cooper S
<b>Engine/transmission<sup>1,2</sup></b>			
Cylinders/configuration/valves per cylinder	3/inline/4	3/inline/4	4/inline/4
Displacement cc	1499	1499	1998
Nominal power/rated speed kW/hp/rpm	75/102/3900–6500	100/136/4500–6500	141/192/5000–6000
Max. torque/revs Nm/rpm	190/1380–3600	220/1480–4200	280/1350–4600
Compression ratio/fuel	11/RON 91 MIN	11/RON 91 MIN	11/RON 91 MIN
<b>Mileage</b>			
Maximum speed km/h	190	206 [205]	230 [230]
Acceleration 0–100 km/h s	10.9	8.8 [8.7]	7.2 [7.1]
<b>Consumption<sup>1,2</sup></b>			
Urban l/100 km	7.1–6.7	6.9–6.7 [6.5–6.3]	8.7–8.3 [7.0–6.8]
Extra-urban l/100 km	5.0–4.6	4.9–4.5 [4.8–4.4]	5.5–5.2 [5.2–4.5]
Combined l/100 km	5.8–5.4	5.6–5.3 [5.4–5.1]	6.7–6.4 [5.8–5.4]
CO <sub>2</sub> emissions, combined g/km	131–122	128–121 [123–116]	152–145 [131–123]

<sup>1</sup> All figures relate to vehicles with the standard 6-speed manual transmission. Values in [ ] relate to vehicles with 7-speed/8-speed Steptronic transmission.

<sup>2</sup> The values shown for fuel consumption, CO<sub>2</sub> emissions and energy consumption are calculated in accordance with the measurement method prescribed in the European Regulation (EC) 715/2007 in the version applicable at the time of approval. The figures refer to a vehicle with basic configuration in Germany and the range shown considers optional equipment and the different size of wheels and tyres available on the selected model and may vary during the configuration. The values are already based on the new WLTP test cycle and have been translated back into NEDC-equivalent values for the purpose of comparison. For these models, different values to those shown here apply when calculating taxes and other vehicle-related duties that (also) focus on the CO<sub>2</sub> emissions.

The models, standard and optional equipment and combinability of options in this catalogue relate to cars supplied by BMW AG for the German market. The availability of standard and optional equipment, and configurations of options, may vary for all models in this brochure after going to press (on 29.05.2019) and may vary from country to country within the European Union. For detailed information about the situation in your country, please contact your authorized MINI dealer. Subject to changes in design and equipment.

© BMW AG, Munich/Germany.  
Not to be reproduced, wholly or in part, without the written permission of BMW AG, Munich.

Find out more online at:  
[mini.com](http://mini.com)



[facebook.com/mini](https://www.facebook.com/mini)

July 2019  
[mini.com](http://mini.com)

5 11 05 730 020 7 2019  
Printed in Germany.